



**Noise Monitoring Result**

**Day Time (0700 - 1900hrs on normal weekdays)**

Location: M1a - Footbridge at EX-Wanchai Harbour Road Sports Centre

Date	Time	Weather	Measurement Noise Level			Baseline Level	Construction Noise Level	Limit Level
			Leq	L10	L90	Leq	Leq	Leq
Unit: dB(A), (30-min)								
31/5/2017	13:50	Fine	79.4	80.1	77.2	72	78	75
8/6/2017	14:00	Fine	80.5	82.6	77.0	72	80	75
13/6/2017	13:50	Cloudy	79.3	81.2	75.1	72	78	75
22/6/2017	13:55	Fine	79.6	81.4	76.8	72	79	75
26/6/2017	16:11	Fine	81.7	81.9	77.9	72	81	75

Location: M2b - Noon-day gun area

Date	Time	Weather	Measurement Noise Level			Baseline Level	Construction Noise Level	Limit Level
			Leq	L10	L90	Leq	Leq	Leq
Unit: dB(A), (30-min)								
31/5/2017	15:10	Fine	68.9	70.5	66.0	68	63	75
8/6/2017	15:20	Fine	70.3	72.4	66.5	68	67	75
12/6/2017	10:45	Cloudy	71.3	73.4	66.9	68	69	75
23/6/2017	10:55	Fine	68.1	69.4	66.3	68	58	75
28/6/2017	11:05	Fine	68.9	70.0	66.9	68	63	75

Location: M3a - Tung Lo Wan Fire Station

Date	Time	Weather	Measurement Noise Level			Baseline Level	Construction Noise Level	Limit Level
			Leq	L10	L90	Leq	Leq	Leq
Unit: dB(A), (30-min)								
1/6/2017	13:00	Cloudy	67.3	68.7	65.7	69	67	75
6/6/2017	09:00	Cloudy	65.2	67.2	63.1	69	65	75
14/6/2017	14:00	Cloudy	66.1	67.7	63.9	69	66	75
22/6/2017	09:55	Fine	66.2	67.5	64.3	69	66	75
28/6/2017	13:40	Fine	65.8	67.0	64.4	69	66	75

Location: M4b - Victoria Centre

Date	Time	Weather	Measurement Noise Level			Baseline Noise Level	Construction Noise Level	Limit Level
			Leq	L10	L90	Leq	Leq	Leq
Unit: dB(A), (30min)								
1/6/2017	13:45	Cloudy	69.8	71.5	67.4	67	66	75
6/6/2017	09:55	Cloudy	66.1	67.3	64.6	67	66	75
13/6/2017	11:25	Cloudy	74.6	79.6	67.2	67	74	75
22/6/2017	10:40	Fine	66.7	68.0	65.3	67	67	75
28/6/2017	14:25	Fine	68.5	69.5	66.1	67	62	75

Location: M5b - City Garden

Date	Time	Weather	Measurement Noise Level			Baseline Level	Construction Noise Level	Limit Level
			Leq	L10	L90	Leq	Leq	Leq
Unit: dB(A), (30min)								
1/6/2017	14:30	Cloudy	70.9	72.6	68.6	68	68	75
6/6/2017	10:55	Cloudy	75.4	77.4	71.4	68	75	75
14/6/2017	14:50	Cloudy	73.6	74.3	71.4	68	72	75
22/6/2017	11:20	Fine	73.6	76.0	71.1	68	72	75
28/6/2017	15:10	Fine	72.9	74.3	70.7	68	71	75

Location: M6 - HK Baptist Church Henrietta Secondary School

Date	Time	Weather	Measurement Noise Level			Baseline Level	Construction Noise Level	Limit Level
			Leq	L10	L90	Leq	Leq	Leq
Unit: dB(A), (30-min)								
1/6/2017	15:05	Cloudy	68.2	69.2	66.5	71	68	70
8/6/2017	10:03	Fine	69.3	70.1	65.4	71	69	65
16/6/2017	09:30	Cloudy	65.8	67.5	63.8	71	66	65
19/6/2017	10:45	Cloudy	67.9	68.6	66.0	71	68	65
28/6/2017	15:50	Fine	67.5	68.9	65.7	71	68	70



**Noise Monitoring Result**

**Day Time (0700 - 1900hrs on normal weekdays)**

Location: M7e - International Finance Centre (Eastern End of Podium) (Reference Station)

Date	Time	Weather	Measurement Noise Level			Baseline Level	Construction Noise Level	Limit Level
			Leq	L10	L90	Leq	Leq	Leq
Unit: dB(A), (30-min)								
2/6/2017	15:10	Fine	68.9	70.8	66.6	67	65	N/A
6/6/2017	13:50	Cloudy	65.4	67.1	62.4	67	65	N/A
14/6/2017	10:30	Cloudy	66.2	67.6	63.7	67	66	N/A
22/6/2017	16:00	Fine	75.4	78.6	72.1	67	75	N/A
28/6/2017	09:30	Fine	69.4	71.5	65.5	67	66	N/A

Location: M7w - International Finance Centre (Western End of Podium)

Date	Time	Weather	Measurement Noise Level			Baseline Level	Construction Noise Level	Limit Level
			Leq	L10	L90	Leq	Leq	Leq
Unit: dB(A), (30-min)								
2/6/2017	14:30	Cloudy	65.9	67.3	63.9	69	66	75
6/6/2017	14:30	Cloudy	64.7	66.0	62.9	69	65	75
14/6/2017	09:58	Cloudy	66.7	68.0	64.9	69	67	75
22/6/2017	16:32	Fine	66.2	68.7	63.4	69	66	75
28/6/2017	10:05	Fine	66.2	67.6	64.1	69	66	75

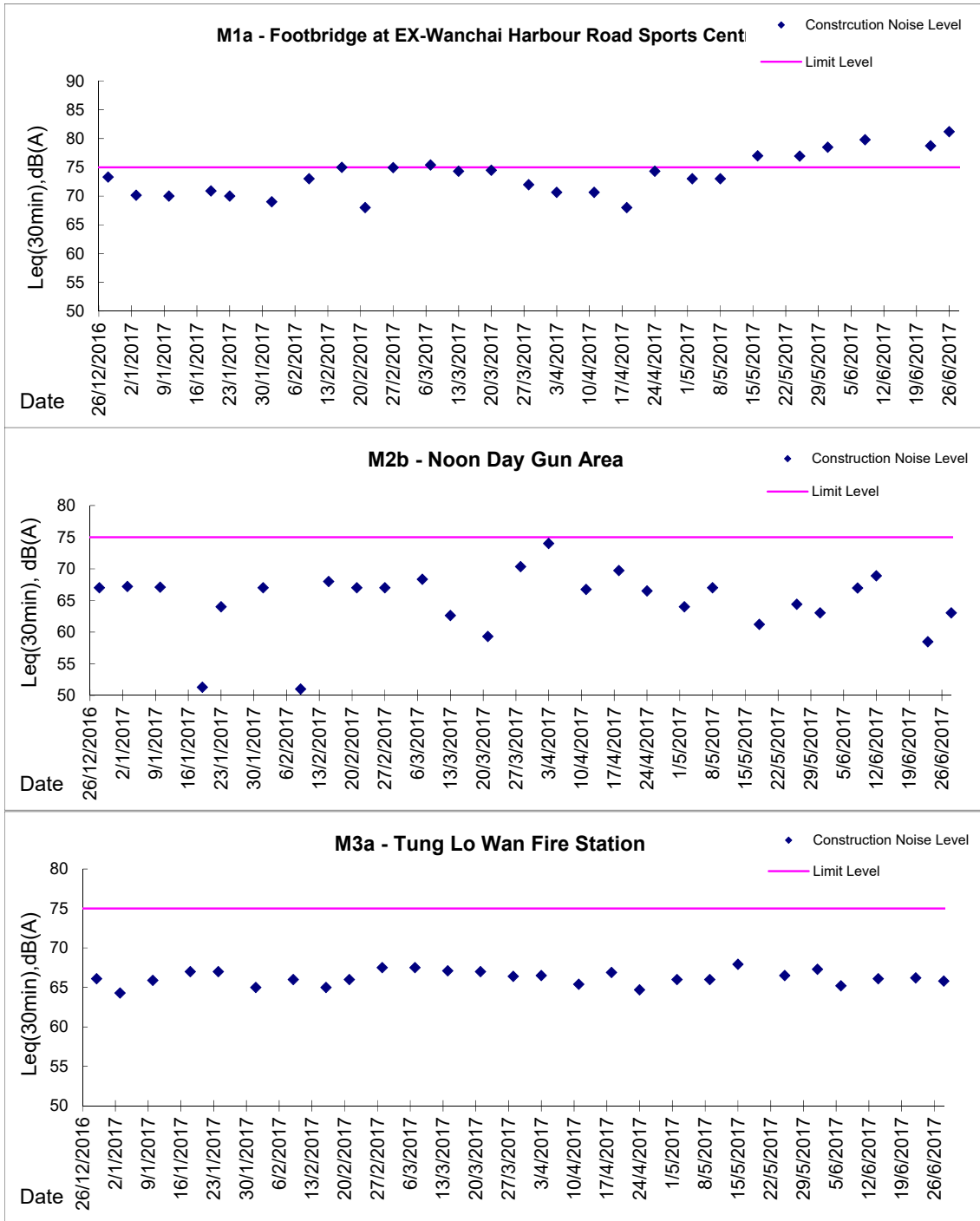
Location: M8 - City Hall

Date	Time	Weather	Measurement Noise Level			Baseline Level	Construction Noise Level	Limit Level
			Leq	L10	L90	Leq	Leq	Leq
Unit: dB(A), (30-min)								
2/6/2017	13:40	Fine	64.9	67.0	60.8	64	58	70
6/6/2017	15:20	Cloudy	63.4	66.3	58.1	64	63	70
14/6/2017	15:45	Cloudy	65.7	68.0	62.3	64	61	70
22/6/2017	15:10	Fine	66.2	68.8	56.9	64	62	70
28/6/2017	08:45	Fine	60.1	62.0	56.7	64	60	70



**Graphic Presentation of Noise Monitoring Result**

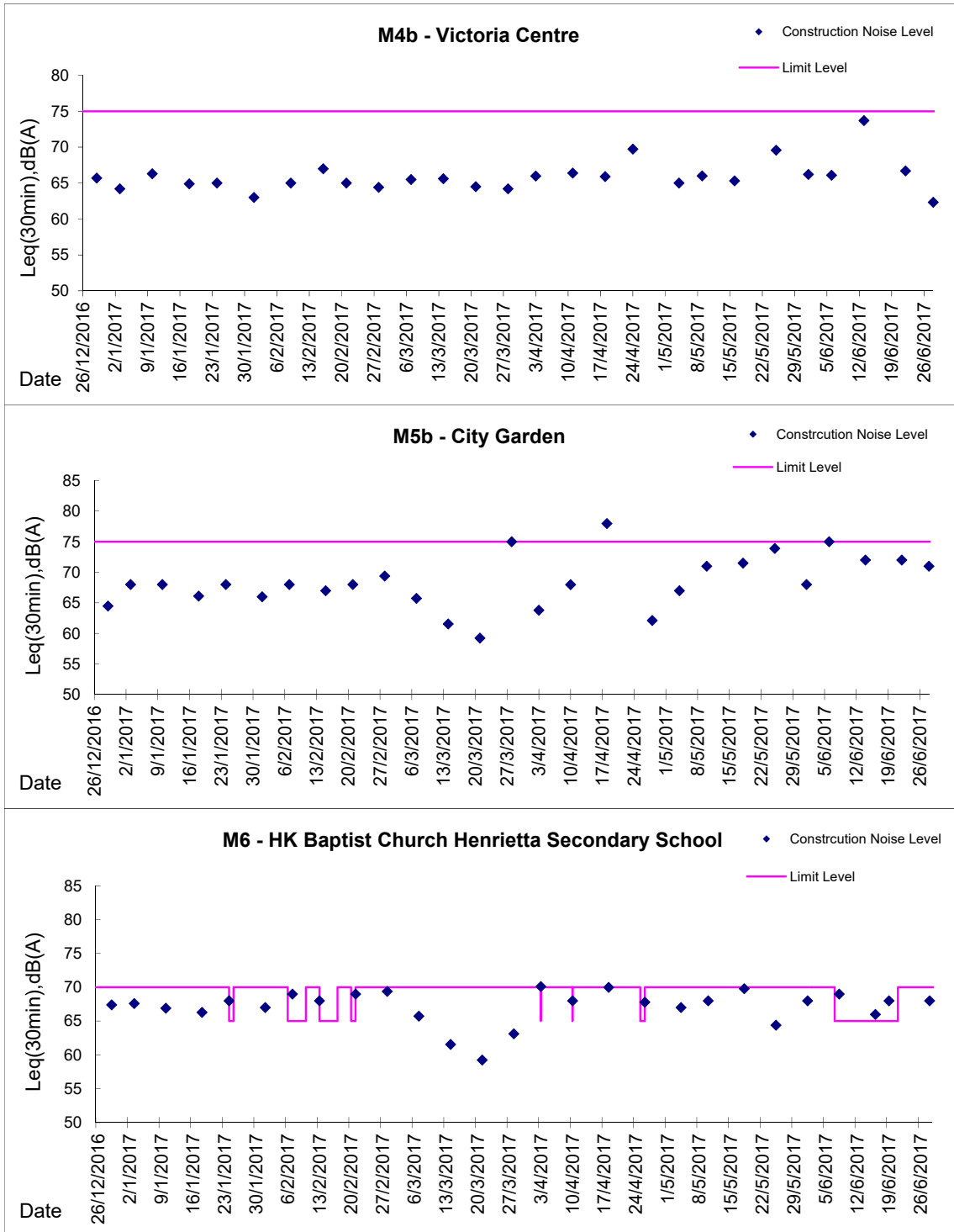
**Day Time (0700 - 1900hrs on normal weekdays)**





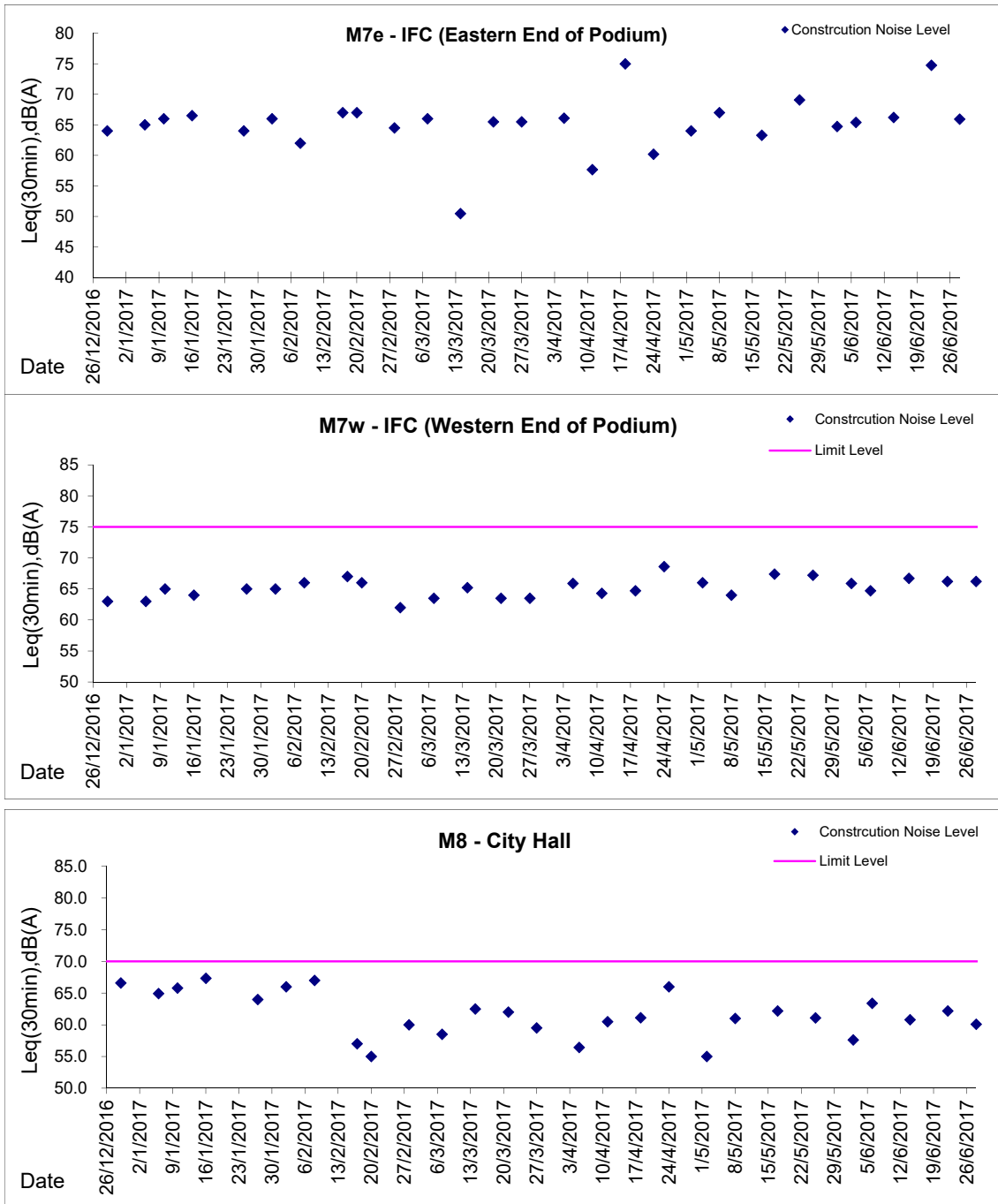
**Graphic Presentation of Noise Monitoring Result**

**Day Time (0700 - 1900hrs on normal weekdays)**



**Graphic Presentation of Noise Monitoring Result**

**Day Time (0700 - 1900hrs on normal weekdays)**



\* Remark: M7e - IFC (Eastern End of Podium) is a reference monitoring station